



CURRENT STATUS OF CONFIRMED CASES



93



CURRENT CASES
INTENSIVE CARE UNITS (ICU)

ACT	NSW	NT	QLD	SA	TAS	VIC	WA
3	37	0	13	10	2	13	15

305



CURRENT CASES
ADMITTED TO HOSPITALS

ACT	NSW	NT	QLD	SA	TAS	VIC	WA
6	103	24	42	16	13	47	54

310,700

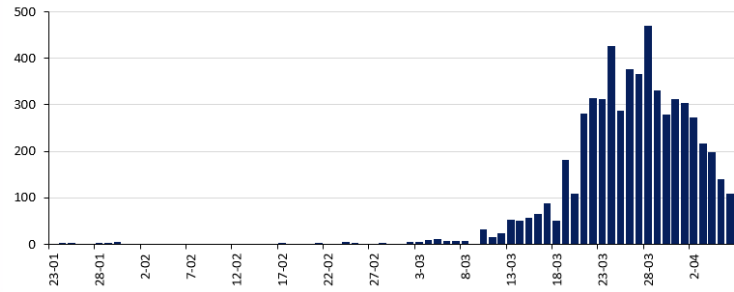


1.9% POSITIVE

TOTAL TESTS
CONDUCTED

ACT	NSW	NT	QLD
5,497	126,146	2,999	61,834
POSITIVE	POSITIVE	POSITIVE	POSITIVE
1.8%	2.1%	0.9%	1.5%
SA	TAS	VIC	WA
33,831	3,192	58,000	19,201
POSITIVE	POSITIVE	POSITIVE	POSITIVE
1.2%	2.8%	2.1%	2.4%

DAILY NUMBER OF REPORTED CASES

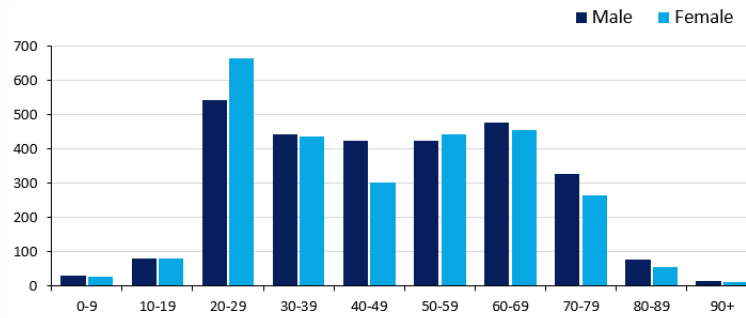


CASES IN AGED CARE SERVICES

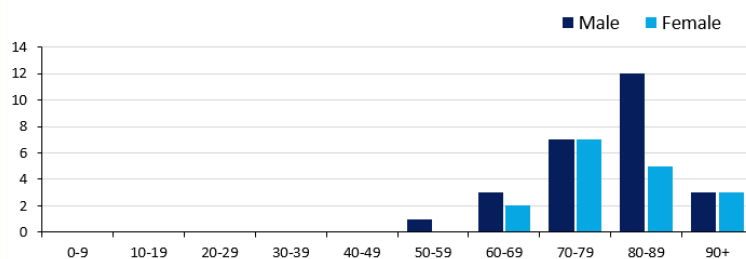
Confirmed cases	Australia	ACT	NSW	NT	Qld	SA	Tas	Vic	WA
Residential Care	25 [5] (9)	0	23 [5] (8)	0	1 (1)	0	0	1	0
In Home Care	7 (1)	0	3	0	2	0	1 (1)	1	0

Cases in care recipients [recovered] (deaths)

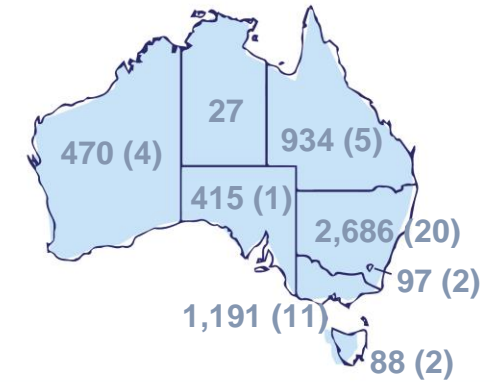
CASES BY AGE GROUP AND SEX



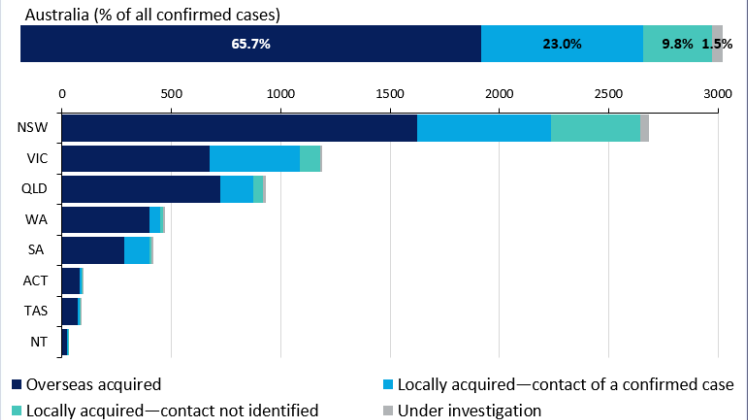
DEATHS BY AGE GROUP AND SEX



CASES (DEATHS) BY STATE AND TERRITORIES



CASES BY SOURCE OF INFECTION



PUBLIC HEALTH RESPONSE MEASURE

